

Examine the Boxer Bite



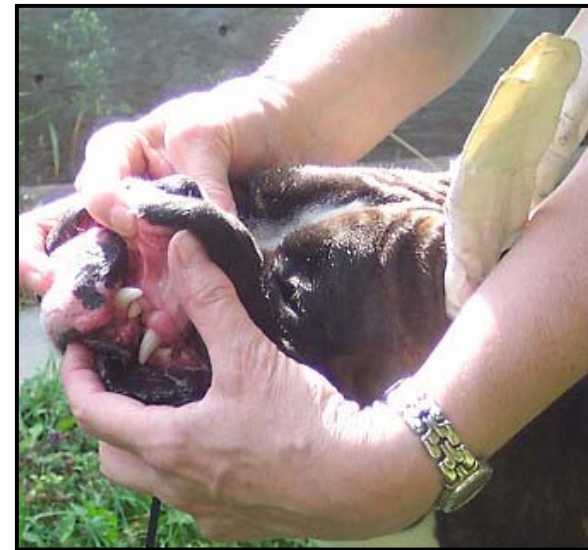
Remember to Check both sides

Examine the bite - wrong



- Some dogs may back away when hand is placed over their eyes
- Backing away makes it appear, wrongly, that the dog has a temperament problem,
- It also makes it difficult to see the bite properly

Showing the Bite to the Judge



This is the correct way for the handler to show the bite to the judge.